

ARKALA  
**Life**

The logo for 'ARKALA Life' is centered. 'ARKALA' is in a green, sans-serif font. 'Life' is in a larger, bold, green serif font. A stylized orange flower with eight petals is positioned above the 'e' in 'Life', and a small green leaf is attached to the stem of the 'i'.

The fine art of living @ Tukkuguda

Premium 2, 2.5 & 3 BHK Homes





# ARKALA Life

The fine art of living @ Tukkuguda

To live a life that gives you immense happiness, it is of paramount importance that you live in a marvelous home in an ideal location. A home that offers an opportunity to realize your lifestyle goals and an address that assures complete exclusivity & convenience will let you master the fine art of living.

Presenting Arkala Life, a premium residential apartments gated community of 2, 2.5 & 3 BHK homes at Tukkuguda, close to ORR.

Aesthetically crafted living spaces and modern lifestyle amenities ensure that you embrace and live a life you always desired.

## OVERVIEW

Site Area: 5 Acres | Phase-1: 3.6 Acres | Phase-2: 1.4 Acres | Structure: 2C+G+9 Floors  
Total No. of Units: 288 | Type of Units: 2, 2.5 & 3 BHK | Clubhouse: 15,000 Sft.  
2 BHK: 1112 - 1413 Sft. | 2.5 BHK: 1432 - 1550 Sft. | 3 BHK: 1567 - 1825 Sft.



# MASTER PLAN



## LEGEND

1. MAIN ENTRANCE & EXIT
2. SECURITY
3. GRANITE STONE & COBBLES PAVING
4. JOGGING/ CYCLING / WALKING TRACK
5. GRASS PAVERS
6. BLOCK ENTRANCE PAVING
7. FIRE TENDER MOVEMENT
8. TOTLOT AREA STAIRS
9. STEPPED SEATING
10. MULTIPURPOSE LAWN (YOGA, MEDITATION WITH TREE LINES)
11. SEATING ALCOVES ON 100'-0" ROAD
12. TOTLOT ENTRANCE
13. CHILDREN'S PLAY AREA WITH SAND BED
14. KIDS PLAY AREA WITH EPDM FLOORING
15. FITNESS STATION
16. BASKET BALL COURT
17. SEATING ALONG GRASS PAVERS PATHWAY
18. SEATING POCKETS ALONG COMPOUND WALL
19. CUTOUT AREA PLANTER BED WITH LAWN
20. AVENUE PLANTING
21. PAVING APPROACH ROAD
22. VISITORS PARKING
23. OUT DOOR BADMINTON COURT
24. CRICKET PRACTICING PITCH
25. SKATING TRACK
26. HALF SCOTCH PLAY AREA WITH LETTERS
27. IDENTIFYING OBJECTS
28. CHESS PLAY AREA

## AMENITIES

Redefine your lifestyle with new age facilities

Experience and indulge in refreshing lifestyle amenities that let you pursue new interests and enjoy the relaxing pastimes you've always loved. Embrace the urban living that you deserve to experience with the contemporary amenities of Arkala Life.



Reception Lobby in all Blocks



Infinity Swimming Pool



Gym



Children Play Area



Half Basketball Court



Outdoor Badminton Court



Indoor Games



Preview Theatre



EV Charging



Party Lawn



Banquet Hall



Cafeteria



Conference Room



Co-Working Spaces



Library



Spa / Saloon



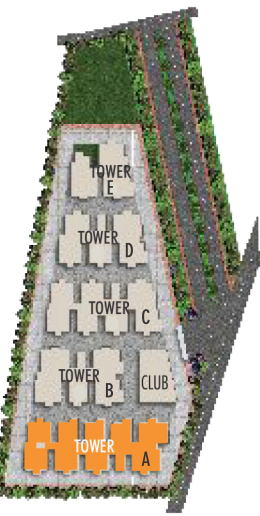
Guest Lobby



Guest Room



**TOWER-A**  
TYPICAL FLOOR PLAN



2 BHK-E-1248 Sft.



2 BHK-E-1112 Sft.



2 BHK-E-1130 Sft.



2 BHK-E-1112 Sft.



3 BHK-E-1594 Sft.



8'-0" WIDE CORRIDOR

8'-0" WIDE CORRIDOR

8'-0" WIDE CORRIDOR

6

7

8

9

2 BHK-W-1324 Sft.



2 BHK-W-1305 Sft.



2 BHK-W-1314 Sft.

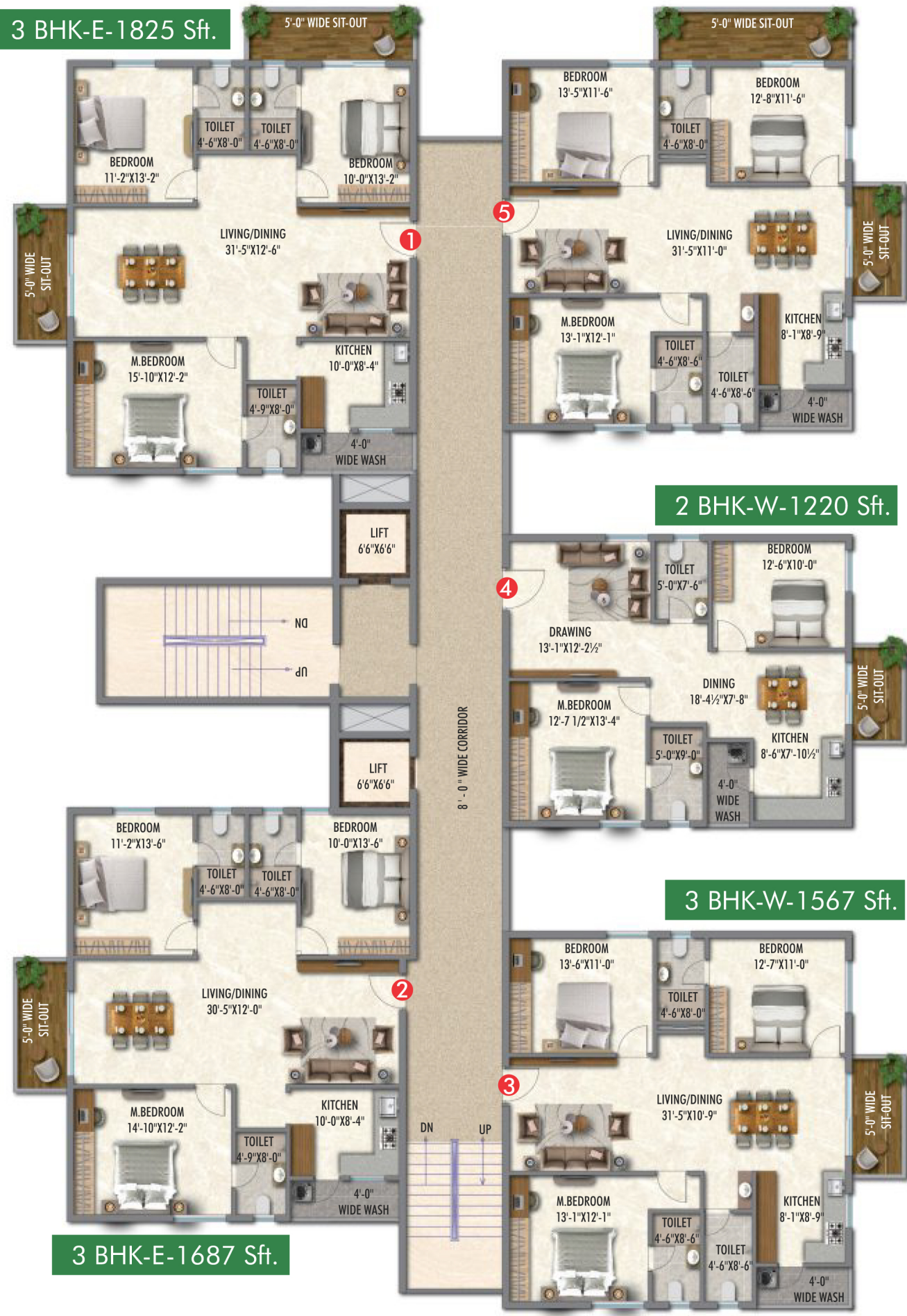
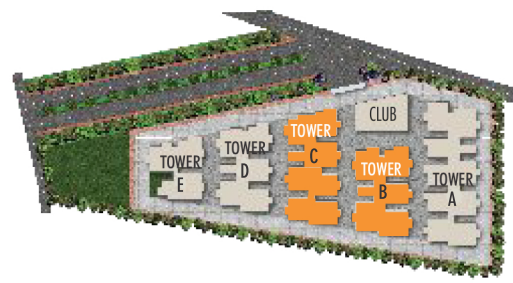


3 BHK-W-1645 Sft.

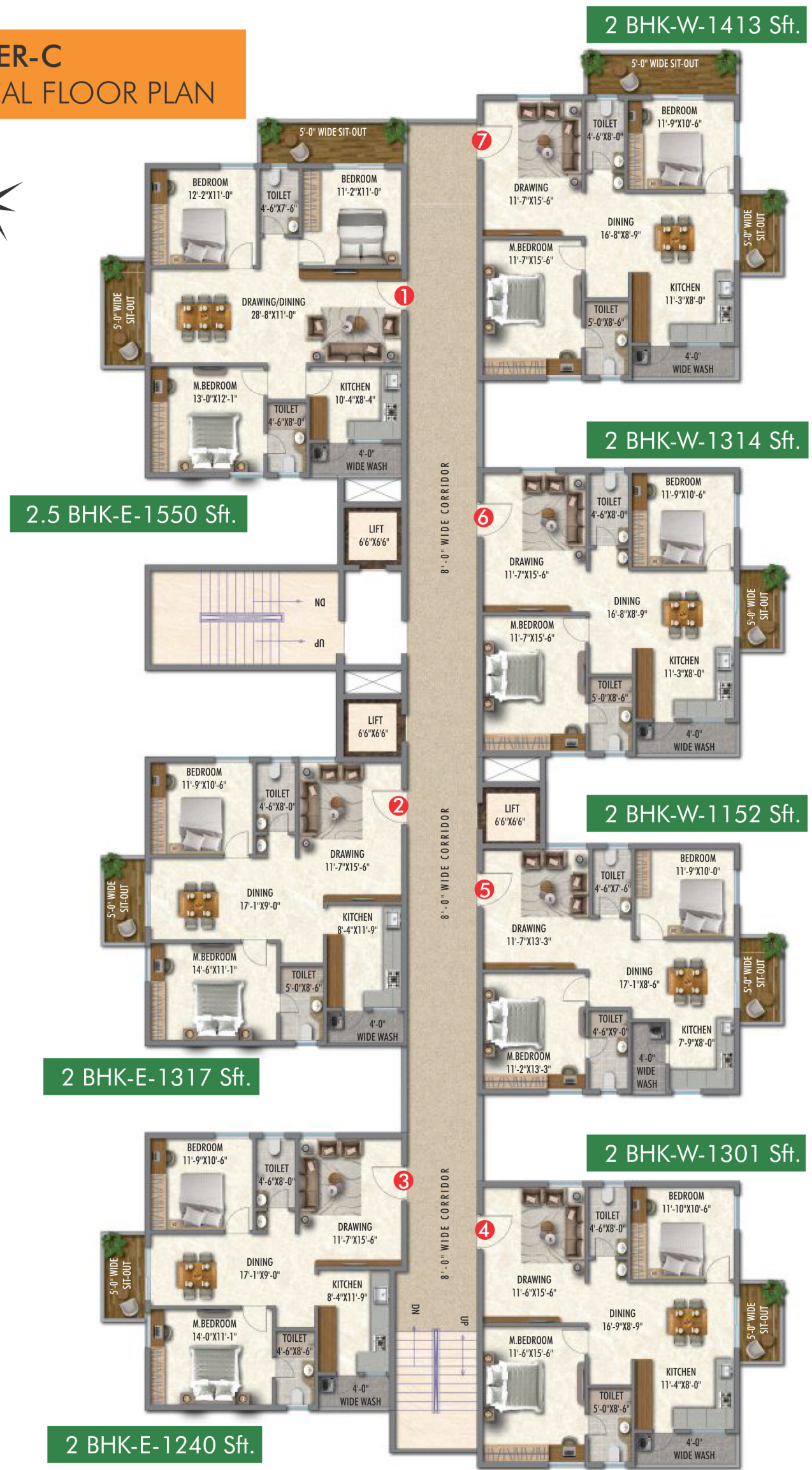




# TOWER-B TYPICAL FLOOR PLAN



# TOWER-C TYPICAL FLOOR PLAN





**TOWER-D**  
TYPICAL FLOOR PLAN



2.5 BHK-E-1550 Sft.



2.5 BHK-W-1550 Sft.



2 BHK-W-1307 Sft.

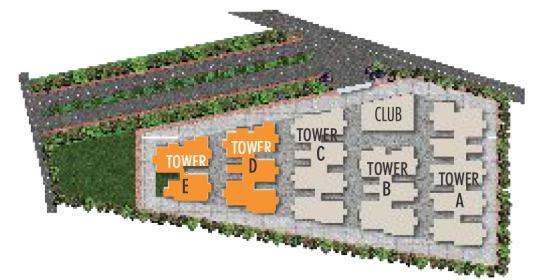


2.5 BHK-E-1432 Sft.



2 BHK-W-1308 Sft.

**TOWER-E**  
TYPICAL FLOOR PLAN



3 BHK-E-1700 Sft.



3 BHK-W-1722 Sft.



3 BHK-W-1610 Sft.

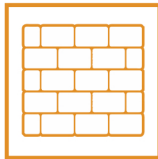


## SPECIFICATIONS



### STRUCTURE

RCC framed structure with CC block masonry



### WALL FINISHES

Internal: Two coats of putty, one coat of primer and two coats of premier emulsion

External: Texture / two coats of putty, one coat of primer and two coats of exterior emulsion



### FLOORING

Drawing, Dining, Living, Bedrooms, Kitchen: 600X600 mm sized double charged Vetrified tiles of reputed brand

Balcony / Utility / Bathroom: Antiskid vitrified / ceramic tiles

Corridors: Vitified Tiles

Staircase: Narural Stone/Granite



### WINDOWS / GRILLS

All windows are of UPVC glazed sliding windows with MS safety grills and mosquito mesh shutter.



### DOORS

Main Door: Hardwood frame and teak finished flush shutter with melamine spray polish with reputed hardware

Internal / Toilet / Utility Doors: Hardwood frame with both sided laminated flush shutter with reputed hardware

Balconies: UPVC glazed French sliding doors with mosquito mesh shutter



### BATHROOMS

Sanitary fittings: Hindware / Cera or equivalent make wall mounted EWC and wash basins in all bathrooms

CP fittings: Jaquar or equivalent make single lever bath and shower mixers

Ceramic tile cladding up to 7' height

Provision for geysers and exhaust fans in all bathrooms

Grid ceiling in all bathrooms



### KITCHEN

Granite platform with single bowl stainless steel sink, 2 feet tile cladding & provision for water purifier

Separate connections for municipal and bore well water

## SPECIFICATIONS



### ELECTRICAL

Cables: Concealed Copper wiring of Polycab or equivalent

Modular switches: Legrand or Anchor or equivalent

Power outlets: for air conditioners in all bedrooms and living

for geysers in all bathrooms

for chimney, Refrigerator, Microwave, Mixer, RO in kitchen

for Washing Machine in utility area



### LIFTS

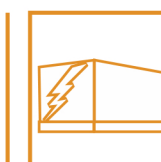
Passengers lift & service lift with stainless steel body for each tower of Jhonson or equivalent make



### COMMUNICATIONS

Intercom facility to all units connecting security and neighborhood.

Fiber cable Provision for internet and DTH



### POWER BACK-UP

100% power back up except for AC's & Geysers



### SECURITY / BMS

Round the clock security

Surveillance cameras in appropriate locations with control room

Solar Power Fencing around the compound



### PARKING MANAGEMENT

Well designed parking spaces with drive way markings, parking signages

Dedicated commercial provisions for charging 5 electrical vehicles

Car Washing Space



### WATER / SEWAGE TREATMENT PLANTS

Water treatment/Softening plant for bore well water

Sewage treatment plant of adequate capacity as per norms will be provided inside the project

Treated sewage water will be used for the landscaping



**An address that stands for convenience**

Feel pampered as your every wish is within arm's reach. Arkala Life, at Tukkuguda, offers the perfect mix of privacy and connectivity. Close to the city, it is just 5 minutes from the international airport and 25 minutes from the IT corridor of Gachibowli and the Financial District. Schools, colleges, entertainment centres and workplaces; everything is in close proximity.



5 mins. to RGI Airport

6 mins. to Wonderla

8 mins. to Fab City (E City)

10 mins. to Hardware Park

10 mins. to DRDO

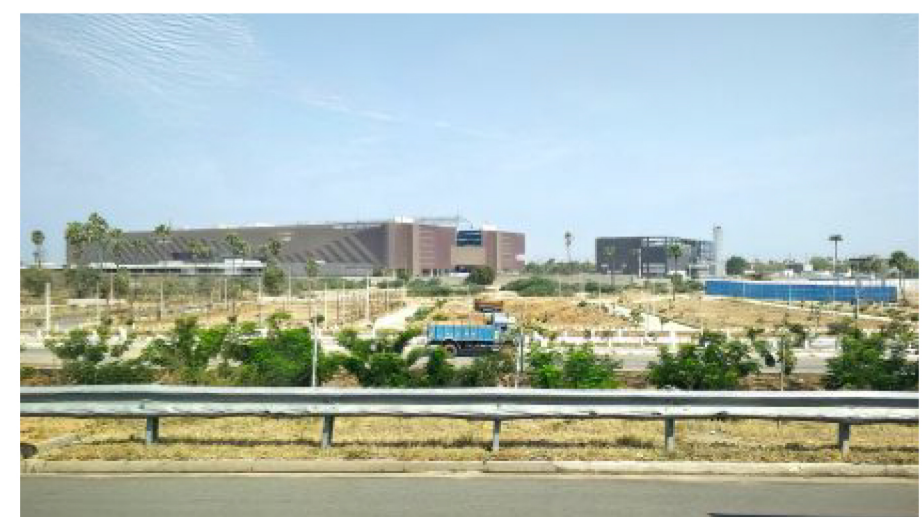
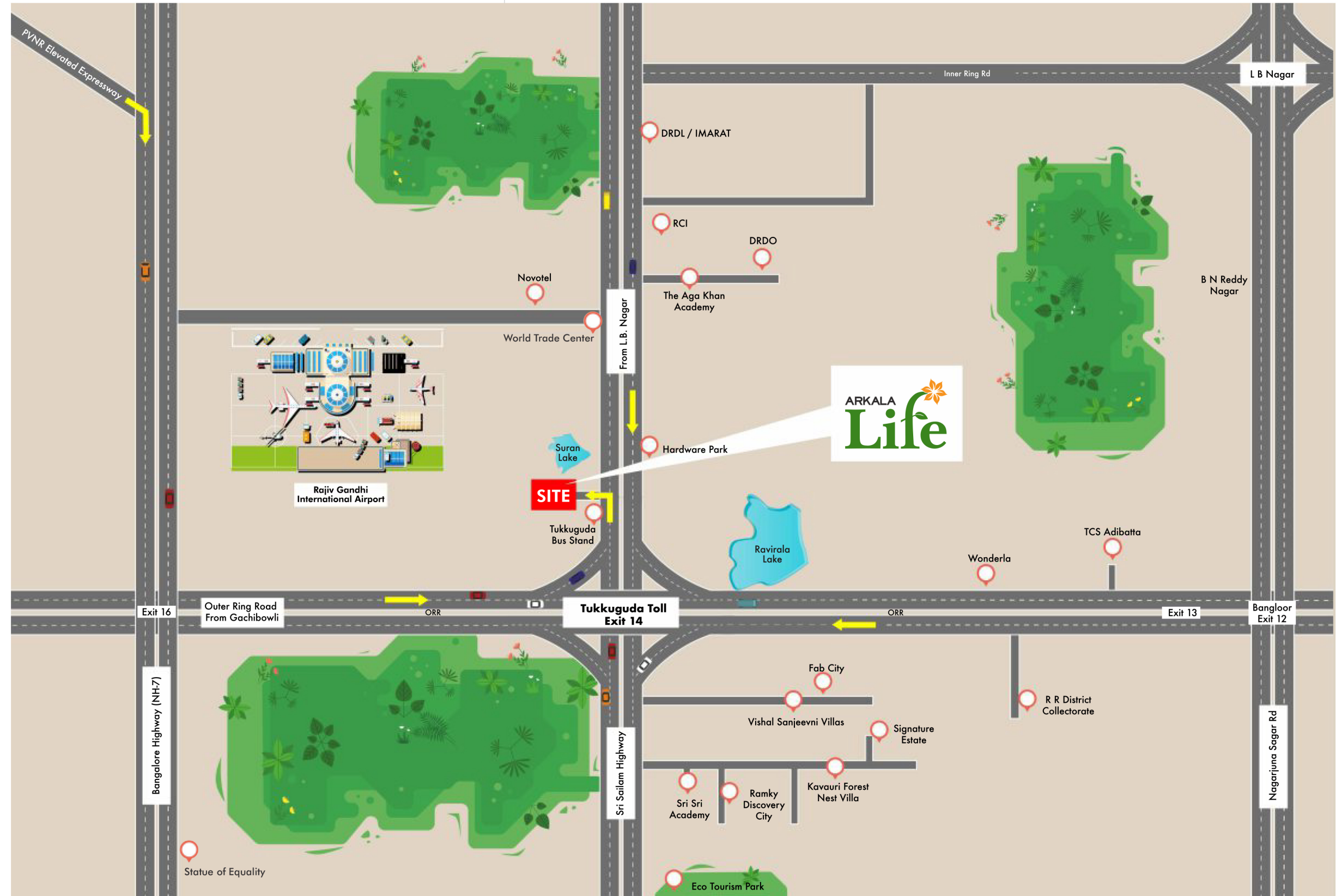
10 mins. to TCS Adibatla

30 mins. to Gachibowli

Intl. Airport



Fab City



TCS Adibatla



Aga Khan Academy



Wonderla



## PROJECT CONSULTANTS

ARCHITECTS



**BHAVISHYA**  
VASTU SHILPA CONSULTANTS PVT.LTD

STRUCTURAL

**SHPL**

LANDSCAPE

**B**  
LAND 8 FORM



**ARKALA**

REALITY & INFRASTRUCTURE PVT. LTD.

**ARKALA REALITY & INFRASTRUCTURE PVT. LTD.**

Sy No. 196, Mankal, Tukkuguda, Hyderabad, Telangana - 501 359.

## MARKETING ASSOCIATES



**urbanyards**

INFRASTRUCTURE | HOUSING | ESTATES

For more information Contact us:

Urban Yards LLP, H.No. 11-15-10/A, Plot No. 12, 4th Floor,  
Opp. Pillar No. 1643, Beside Ankura Hospital, Doctors colony,  
LB Nagar, Hyderabad - 500 074 Telangana, India  
email: [info@urbanyards.in](mailto:info@urbanyards.in)  
[www.urbanyards.in](http://www.urbanyards.in)