



PLANNED MODERN  
LIFESTYLE  
DESTINATION



2 & 3 BHK Luxury Apartment @ Tukkguda





URBAN  
ELITE





URBAN ELITE, an exclusive project located at Tukuguda, close to ORR, offers Premium luxury 2 & 3 BHK Independent apartments. These apartments are designed especially for the few who are looking for something unique and contemporary for their family. Residential colonies, shopping malls, corporate schools and hospitals are around to this project. It has all the elements to give you a grand lifestyle and quality living.





URBAN  
ELITE



Indoor  
games

Baby  
Pool

C+S+5  
Storey Towers

Grand  
View

24/7  
Security

100+  
units

Clubhouse

Multi-Purpose  
Hall

More  
Open Space

Wide  
driveways

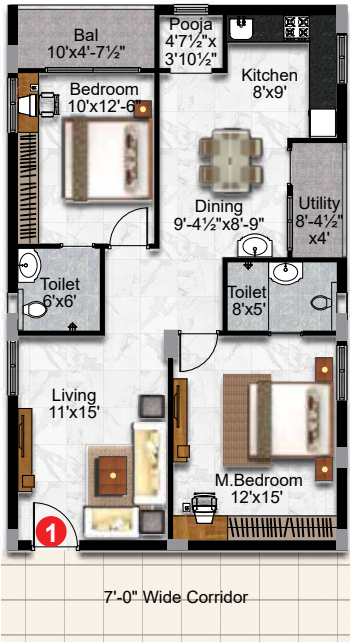
**Comfort and luxury are a given.  
Expect a lot more  
when you're in.**

Homes at URBAN ELITE are designed to bring you much more. These are homes that feature sensible planning and utilization of space, ventilation and openness which are rare to discover these days along with amenities that are a very integral part of today's busy and hectic pace of life.

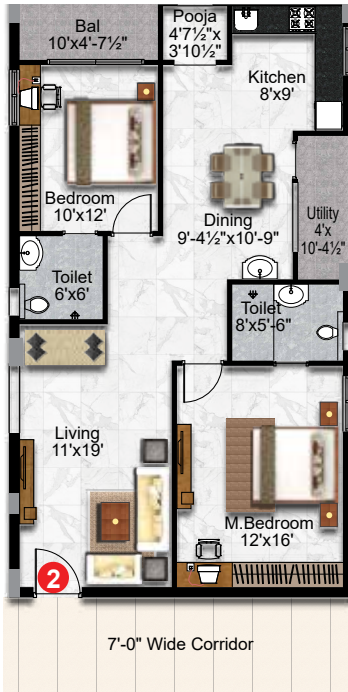
Come home to URBAN ELITE to stitch together the most important years of your life, so you can unfold an album of memories many years forward from now. Because wherever you go at the start of the day, you will always come back home at the end.



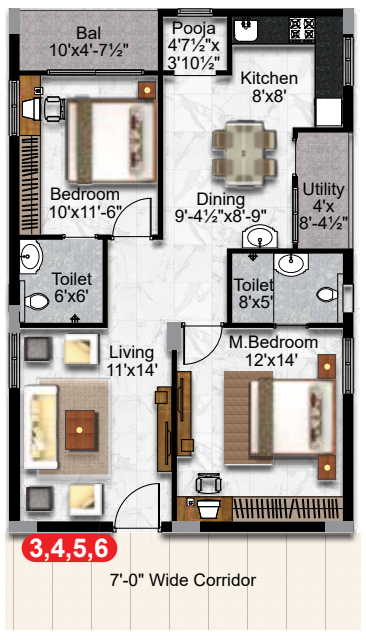




West Facing 2 BHK 1300 Sft

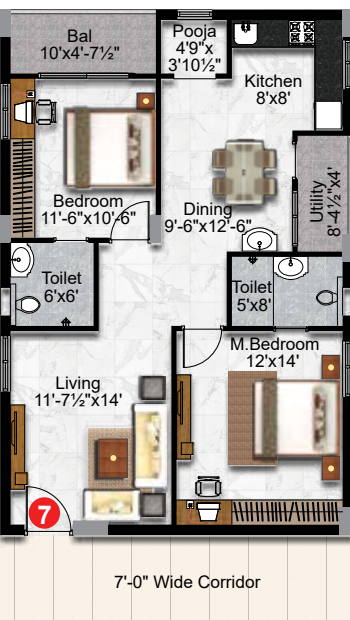


West Facing 2 BHK 1415 Sft

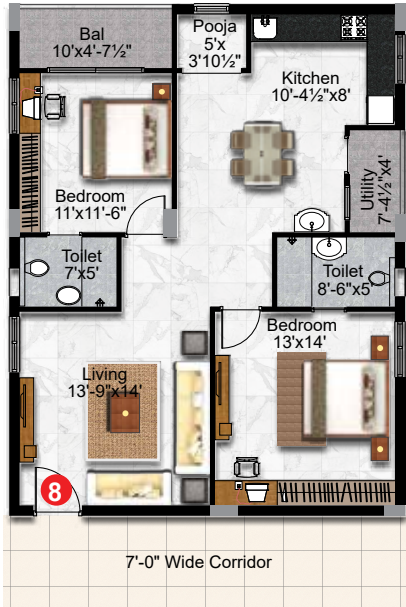


West Facing 2 BHK 1240 Sft

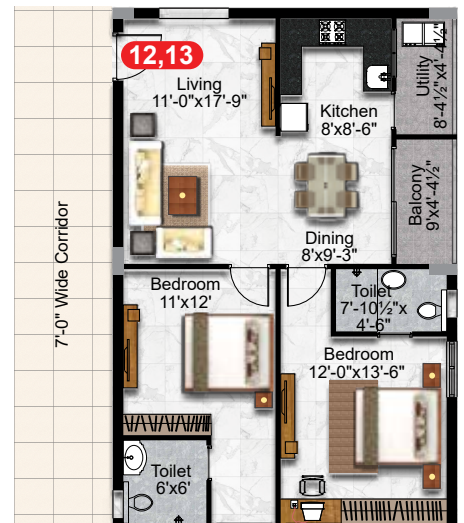
# 2 BHK FLOOR PLANS



West Facing 2 BHK 1270 Sft



West Facing 2 BHK 1390 Sft



North Facing 2 BHK 1240 Sft





East Facing | 2 BHK | 1240 Sft



**2** BHK  
3D VIEW  
FLOOR

FLAT NO. 14, 15, 16, 17

**EAST**

FACING VIEW | 1240 Sft



**2** BHK  
3D VIEW  
FLOOR

FLAT NO. 12, 13

**NORTH**

FACING VIEW | 1240 Sft

URBAN  
**ELITE**

**3** BHK  
3D VIEW  
FLOOR

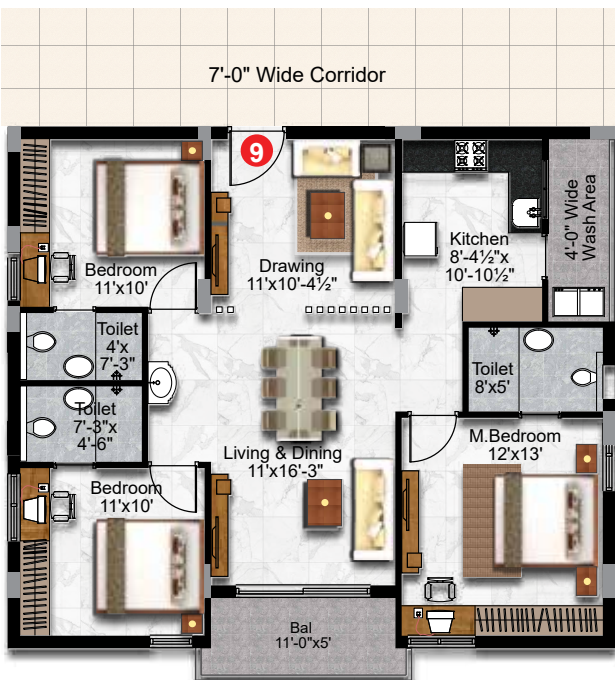


FLAT NO. 10

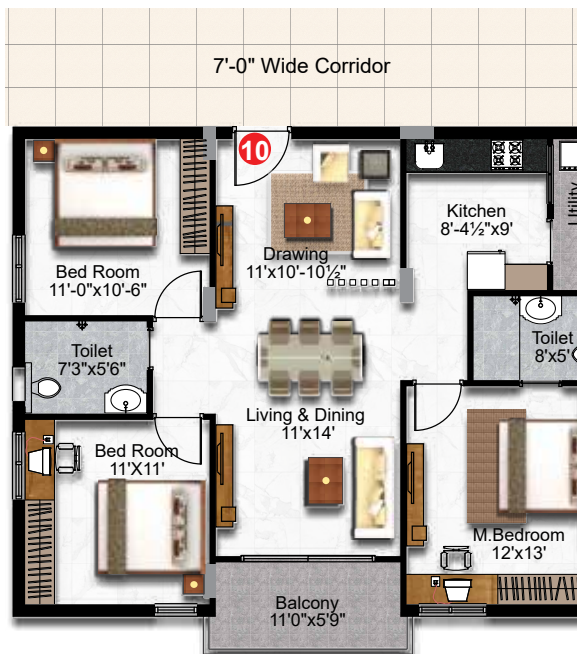
**EAST**

FACING VIEW | 1425 Sft

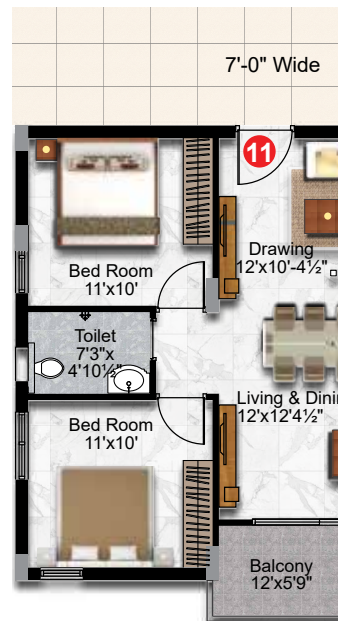
**3 BHK FLO**



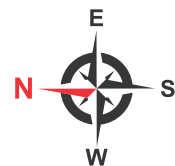
East Facing | **3 BHK** | 1510 Sft



East Facing | **3 BHK** | 1425 Sft



East Facing





# 3

BHK  
3D VIEW  
FLOOR

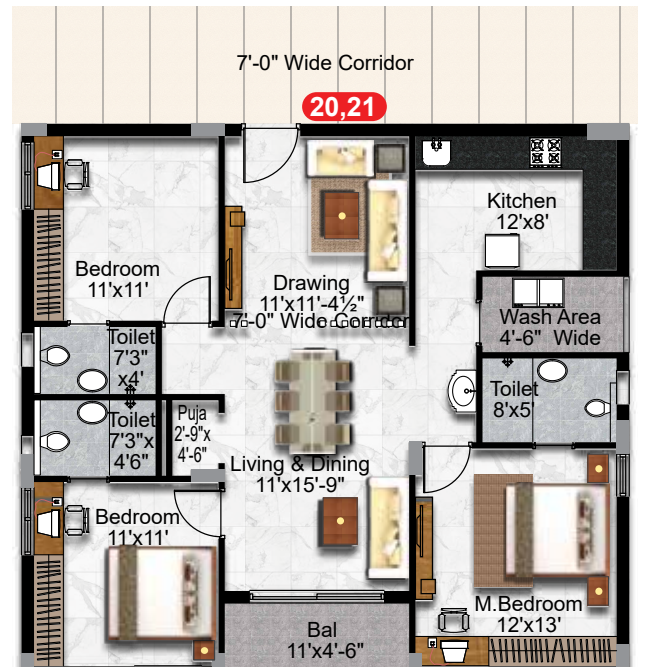
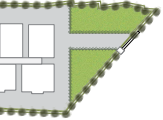
FLAT NO. 18, 19

# WEST

FACING VIEW | 1680 Sft



# OR PLANS



3 BHK | 1405Sft

West Facing | 3 BHK | 1680 Sft

East Facing | 3 BHK | 1575 Sft



## STRUCTURE

RCC Framed Structure  
Walk Light Weight Red Brick

a) Internal double coat sponge finish plaster in CM for walls.

## SPECIFICATIONS

b) External double coat sponge finish plaster in CM for walls

c) Cement - 43 Grade ISI Standard

d) Sand - River Sand

## DOORS

Main door : Teak wood frame up to (7'0" height) and flush shutter with Medium teak veneer hand polish finishing (as per architectural design)

Internal doors: Medium Teak Wood frame (All doors) and membrane shutter wood (or) skin doors of standard make.

## WINDOWS

UPVC 2.5 track  
Certified with ISI Standard.

## KITCHEN

Kitchen Granite Platform with SS sink with bore and municipal Water connections along with Exhaust Fan Provision.

## ELECTRICAL

Electrical We will provide adequate number of points.

3 Phase Power supply for each unit along with individual meter boards.



AERIAL VIEW



## FLOORING

Flooring Inside each flat  
2'-0" x 2'-0" vitrified tiles,

Toilet Tiles - (12"x 18") Anti  
Skid ceramic tiles.

Common Areas Corridor and  
steps with Granite.

## GENERATOR

Power Back-up Generator for  
Lifts and common Areas.

## PAINTING

INTERNAL : Two Coats Paint  
with Lappam Finished Area.

EXTERNAL : Two Coats as  
exterior paints with Asian  
Paint, front side Good texture  
Elevation.

## TOILETS

Toilets EWC in All Bed rooms  
Toilets with flush tank and  
bathroom fittings are with  
standard brands.

## LIFTS

Lifts capacity of 6 passengers  
KONE / Johnson / Sharp or  
equivalent.

## NOTE

1) Registration Charges, Corpus fund,  
GST applicable as per Govt. norms  
and documentation, Title charges  
to be borne by the customers only.

2) Persons desirous to alter / modify  
their flat by prior request and  
additional payment to be borne by  
the customers only.



URBAN  
ELITE

2 & 3 BHK Luxury Apartment  
@ Tukkuguda



# Amenities & Features



Quality Construction



Strategic location



Excellent Ventilation



CCTV



Rain Water Harvesting Pit



Provision Geyser In All Toilets



100% Vaastu



Individual flats



Kids Play Zone



Power Backup Generator



Car Parking Space



DTH Cable Provision



Landscape Zones



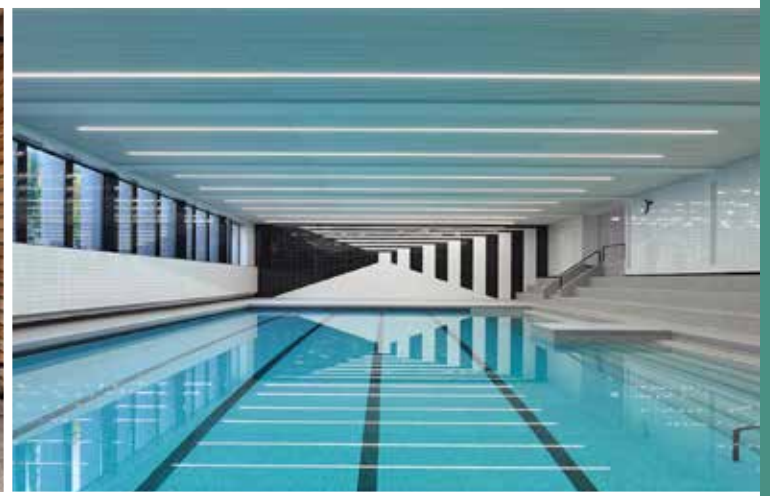
Wide pathway



Provision A/C In All Bedrooms



3 Phase Power Supply



- Club house  
Multipurpose (party) Hall.  
Aerobics / Yoga  
Equipped multi-gym.  
Indoor Games, Table Tennis  
Library,
- Baby Pool
- Children's play area.
- Backup Generator for Common areas and Lifts
- Walking Trail
- Security Room for providing the 24 hours observation
- CCTV



- Separate drinking water point in the kitchen.
- 24-hr water supply.
- Servant's / Driver's toilet
- No Common Walls
- 100% Vaastu Compliant
- Rain water harvesting
- Designed Landscape, Avenue Plantation

  
**URBAN  
ELITE**





# CLUB HOUSE PLAN



5000+ SFT  
CLUBHOUSE  
FLOOR PLAN



About how you spend your leisure time.  
**And also about where  
you spend it.**

For someone who's so time-constrained, we understand that even your leisure moments are spent at a place that are as close to home as possible – and if it's right in the conveniences of your home, we know there's nothing more you'll appreciate. Discerning that need and convenience of your life, URBAN ELITE brings you an array of leisure options like Club house Swimming, Table Tennis, Gymnasium, Indoor Games, Walking Track and Children Play Area. So while work is important, we've made sure even the other aspects of your life are handed out enough time to keep you going and fit.

# LOCATION HIGHLIGHTS

RGI Airport	5 Mins
Wonderla	6 Mins
Fab City (E City)	8 Mins
Hardware Park	10 Mins
DRDO	10 Mins
TCS Adibatla	10 Mins
Gachibowli	30 Mins



Scan this QR code to view the site  
Google Coordinates

## RAJIV GANDHI INTERNATIONAL AIRPORT



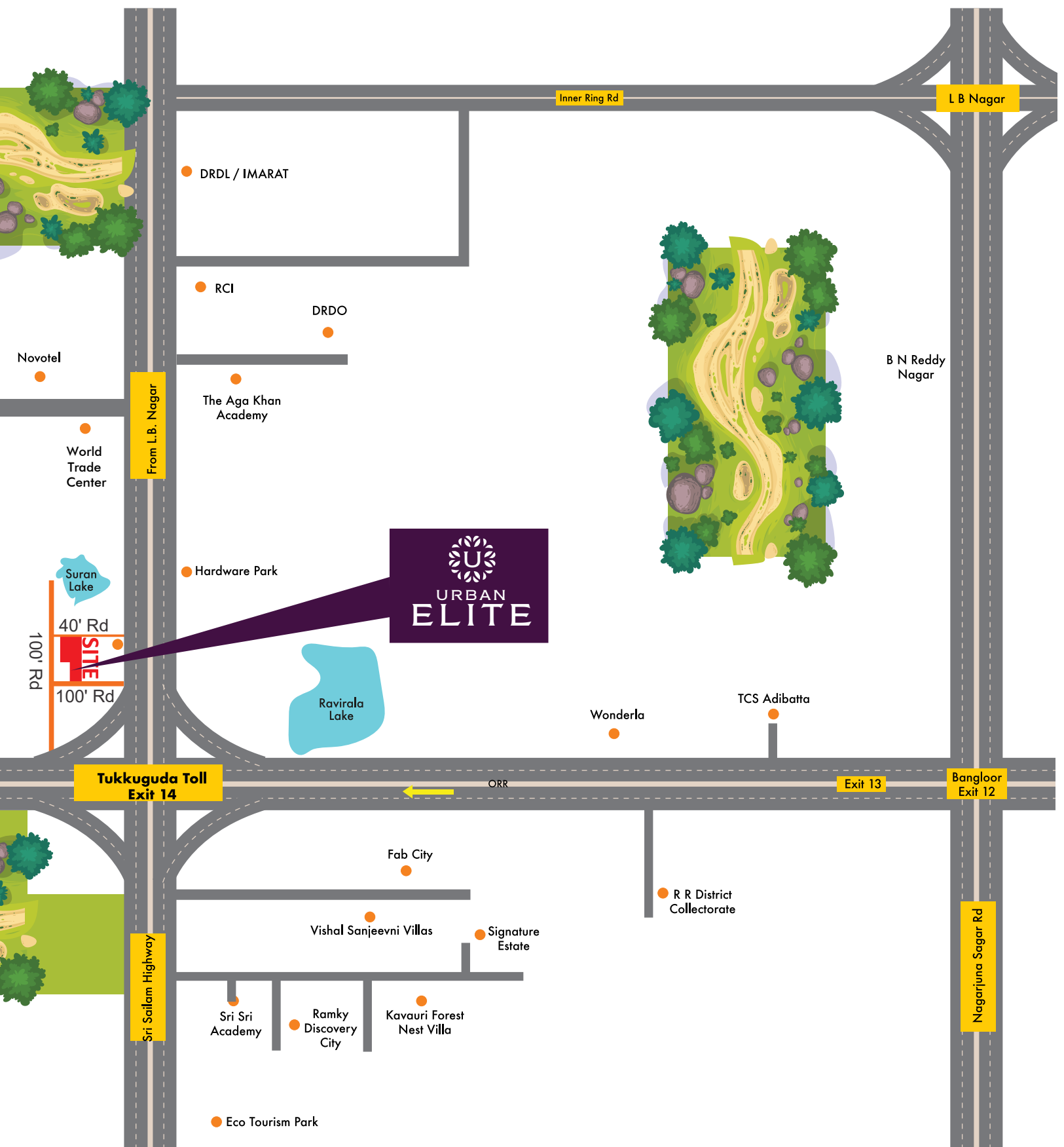
STATUE OF EQUALITY



E- CITY THUKKUGUDA







TCS ADIBATLA



AGA KHAN ACADEMY

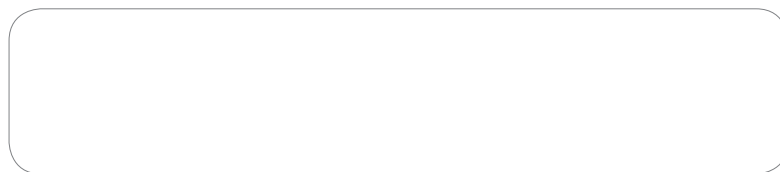


WONDERLA

[www.urbanyards.in](http://www.urbanyards.in)



Opp. Pillar No. 1643, Beside Ankura Hospital,  
Doctors colony, LB Nagar, Hyderabad - 500 074  
Telangana, India e-mail: [info@urbanyards.in](mailto:info@urbanyards.in)



LP: 007176/BP/HMDA/1442/SMD/2022



Registered



Scan this QR code  
to view the website

Architects & Engineers

**JS ASSOCIATES**

Architects Interior Designers

Flat No-201, SR Enclave, Bal Reddy Nagar, Hyderabad,  
Ph : 9502655980 E.mail: [architectnaidu@gmail.com](mailto:architectnaidu@gmail.com)

BROCHURE DESIGN BY

**DG**  
WORKS  
9290 55 9933

NOTE : This brochure is only a conceptual presentation of the project and not a legal offering. The promoters reserve the right to make changes in plans, specifications and elevation as deemed fit.  
DISCLAIMER : The information provided in the brochure (including any images, brochures, plans etc) is for informational purposes only and you shall not rely or depend on such information for the purpose of making any purchase in any of our projects.  
The information in the brochure does not constitute an invitation to purchase, advertisement, marketing or offer for sale of any of the units in our projects. We will be taking steps for registration of the project in accordance with the Real Estate Regulation Authority Act, 2016 as soon as the authority is constituted.





URBAN  
**ELITE**